

Thurrock Local Plan Taskforce

Thurrock Green & Blue Infrastructure Strategy

Prepared by LUC

Doug McNab

26 July 2022

Introduction – what is green infrastructure and why is it important?

- Green infrastructure is *“A network of multi-functional green and blue spaces and other natural features, urban and rural, which is capable of delivering a wide range of environmental, economic, health and wellbeing benefits for nature, climate, local and wider communities and prosperity.”*
- Now widely accepted that GBI is critical to support sustainable growth and wider LA objectives such as health & wellbeing, whilst also helping to address the climate and biodiversity crises
- New development has the potential to put pressure on existing GBI but also provides opportunities to enhance existing GBI and deliver new GBI
- Developing a GBI Strategy is therefore important to direct GBI investment to where it can achieve the most benefits for Thurrock

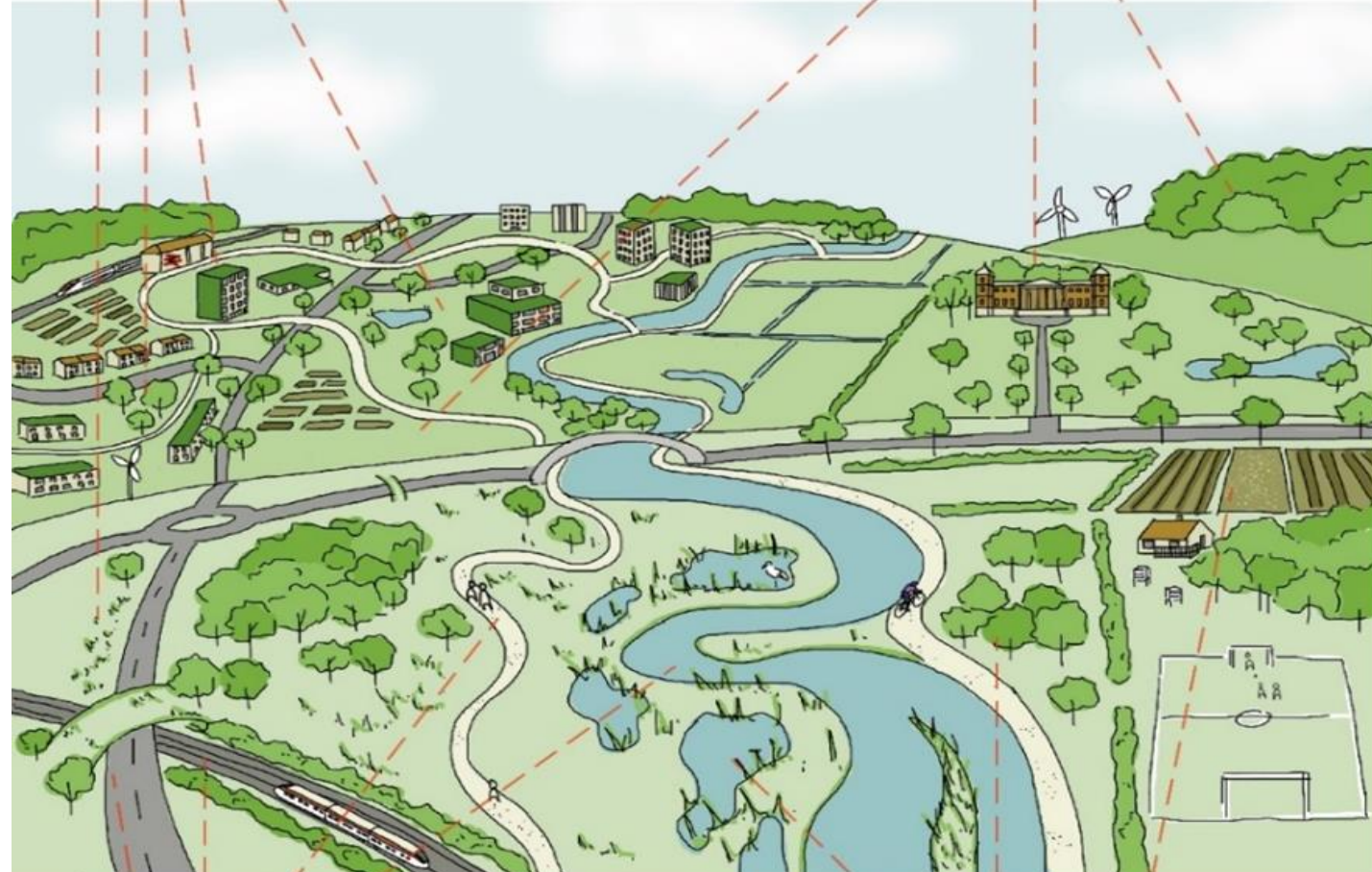
Components of GBI

Elements of the built environment

- Verges
- Street trees
- Private gardens
- Amenity space and pocket parks
- Green / brown roofs and green walls
- Bird/ bat boxes

Managed and natural green spaces

- Public parks
- Formal and informal open space
- Allotments
- Publicly accessible nature conservation sites



Linear linkages

- Footpaths, greenways and bridleways
- Cycle paths and cycle lanes within roads
- Disused railway lines
- Towing paths
- Waterways and river corridors

Aspects of the wider landscape & countryside

- Farmland
- Wetlands / floodplains
- Wildlife habitat

Introduction – what are we doing

- What we're doing and why
- The draft GBI Strategy and changes since
- GBI in planning policy
- Next steps

Local Plan Issues & Options (2019)

- Draft Thurrock GBI Strategy (2019; unpublished)
- South Essex GBI Strategy (2020)
- Essex GI Strategy (2020)

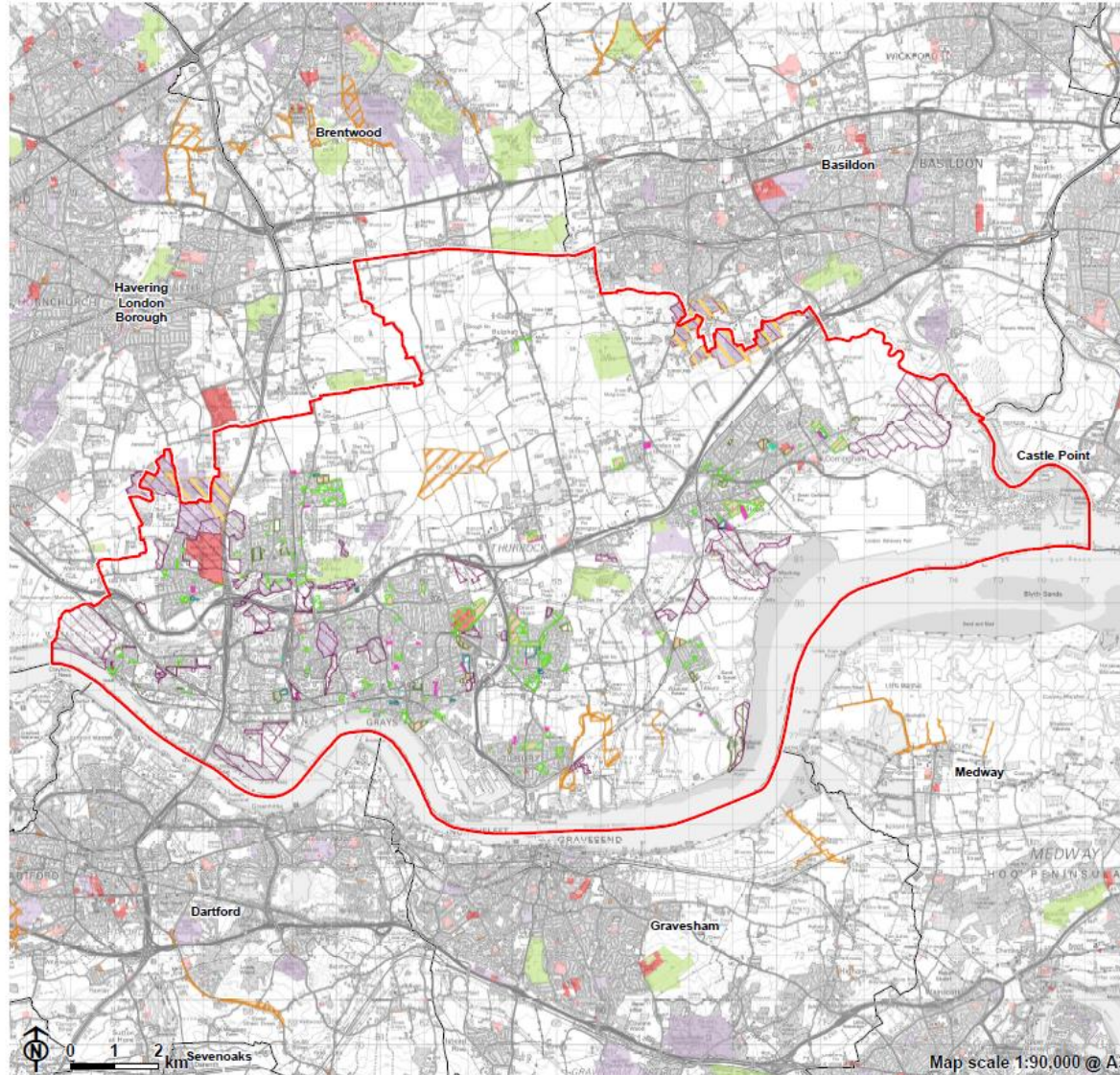
Draft Local Plan

- Updated GBI baseline
- Overarching GBI policies

Submission Local Plan

- Updated GBI proposals
- Refine policies

The GBI baseline



Thurrock Green and Blue Infrastructure Study update
Thurrock Council

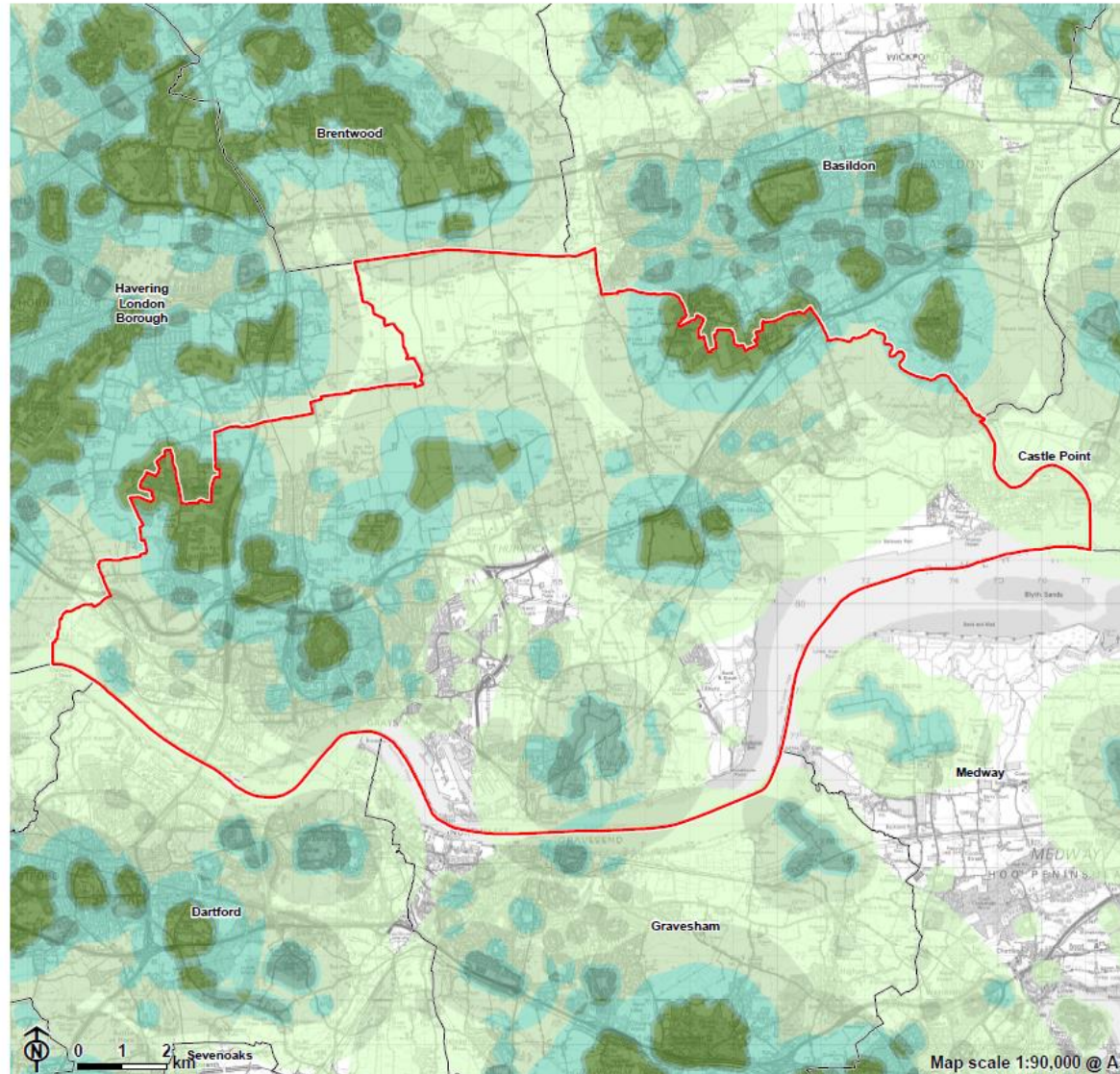


Figure 4.7: Designated Open Space

- Thurrock Council boundary
 - Neighbouring authority boundary
 - Registered Common Land
 - Country park
 - Amenity green space*
 - Semi natural greenspace*
 - Parks and gardens
 - Civic space*
 - Allotment
 - Cemetery*
- Green and Blue Infrastructure Assets**
- Activity Spaces Provision
 - Allotments and Community Growing Spaces
 - Golf Course
 - Sports Facilities
 - Play Space Provision
 - Playing Fields
 - Public Park - General

Notes:
*Indicative Data - Data from previous Thurrock project in 2016

The GBI baseline



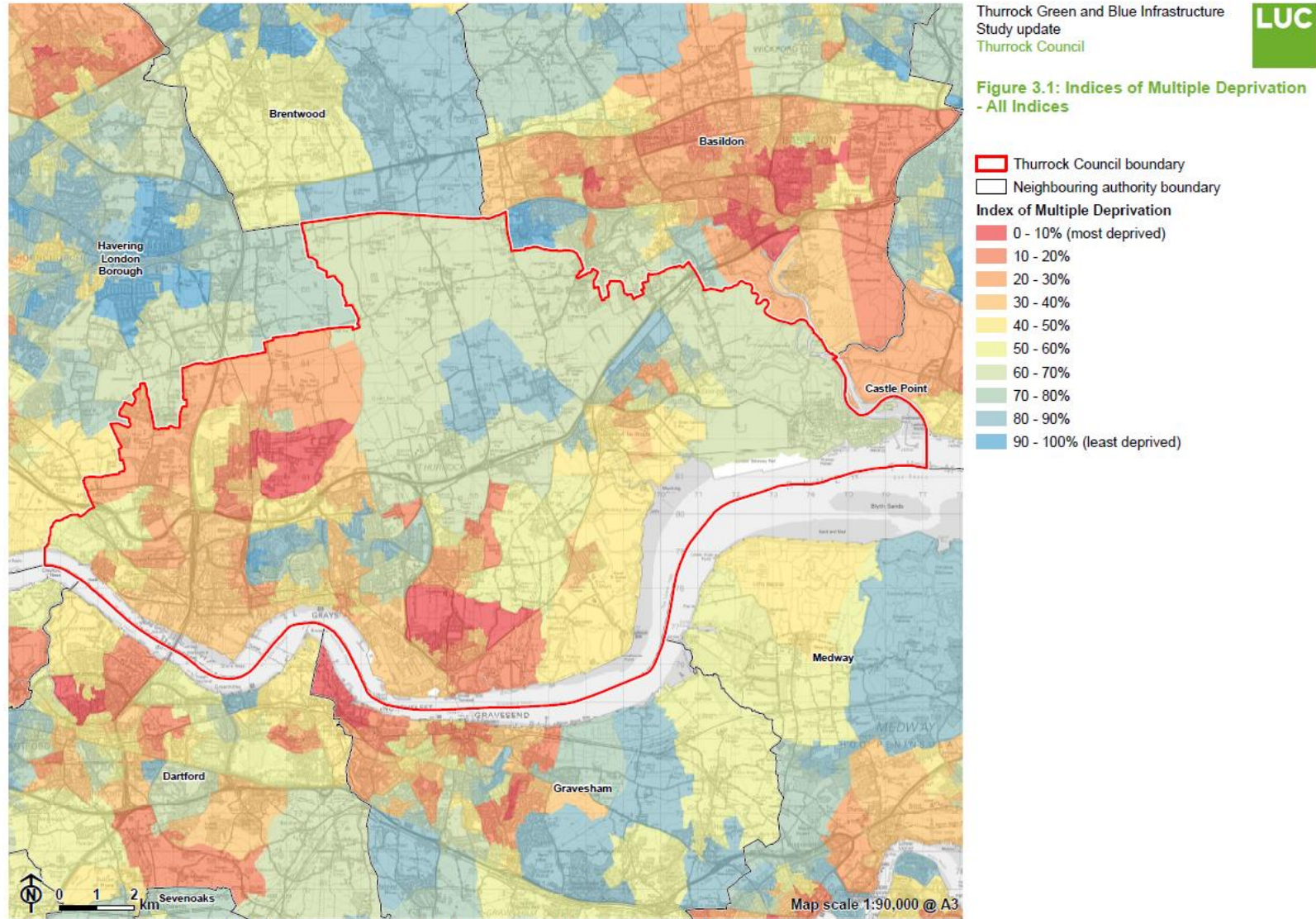
Thurrock Green and Blue Infrastructure
Study update
Thurrock Council



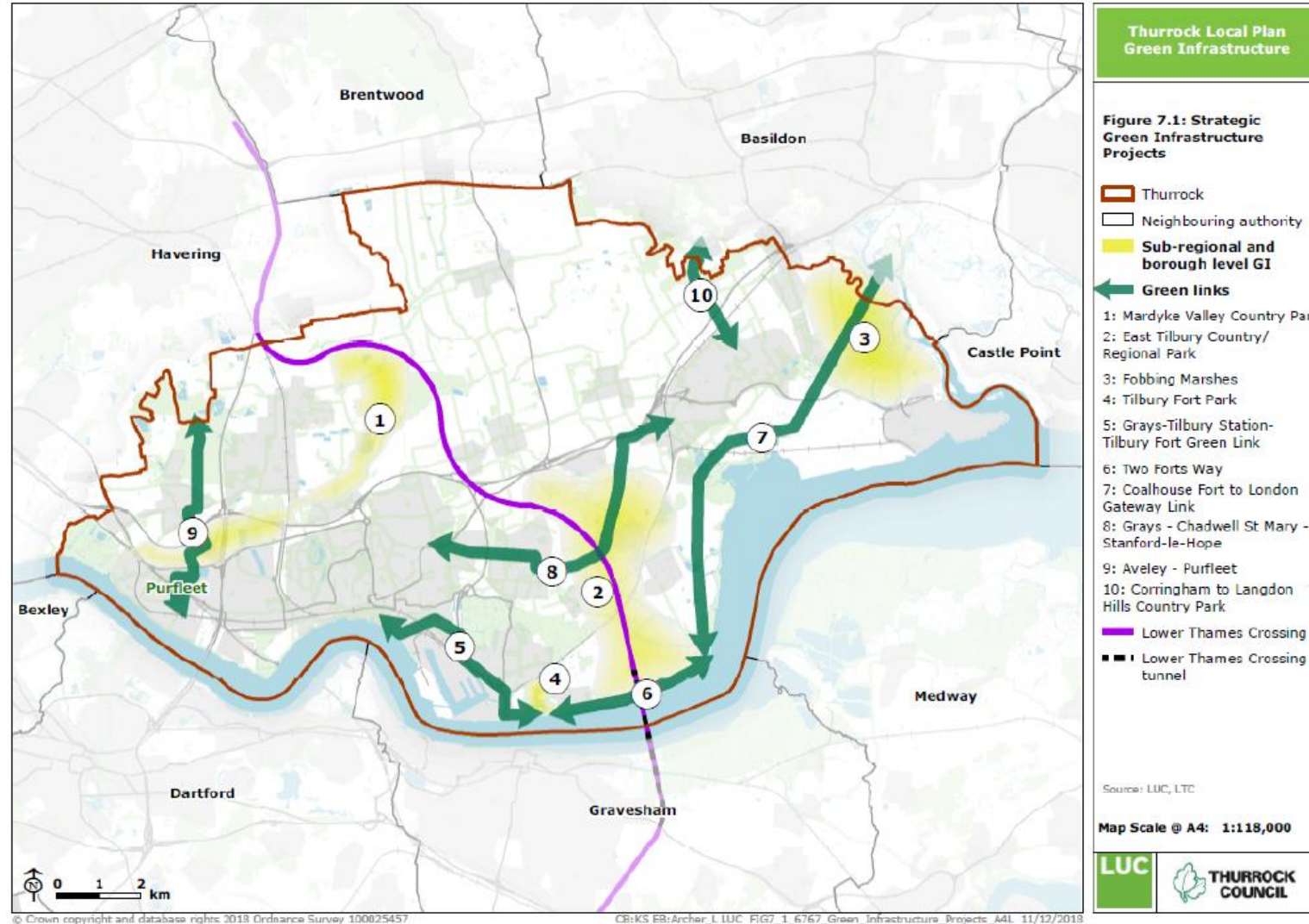
Figure 4.8: Access to Open Space

- Thurrock Council boundary
 - Neighbouring authority boundary
- Accessible Natural Greenspace
ANGSt Profile**
- Meets 1 ANGSt standard
 - Meets 2 ANGSt standards
 - Meets 3 ANGSt standards
 - Meets 4 ANGSt standards
 - Meets 5 ANGSt standards
 - Meets 6 ANGSt standards

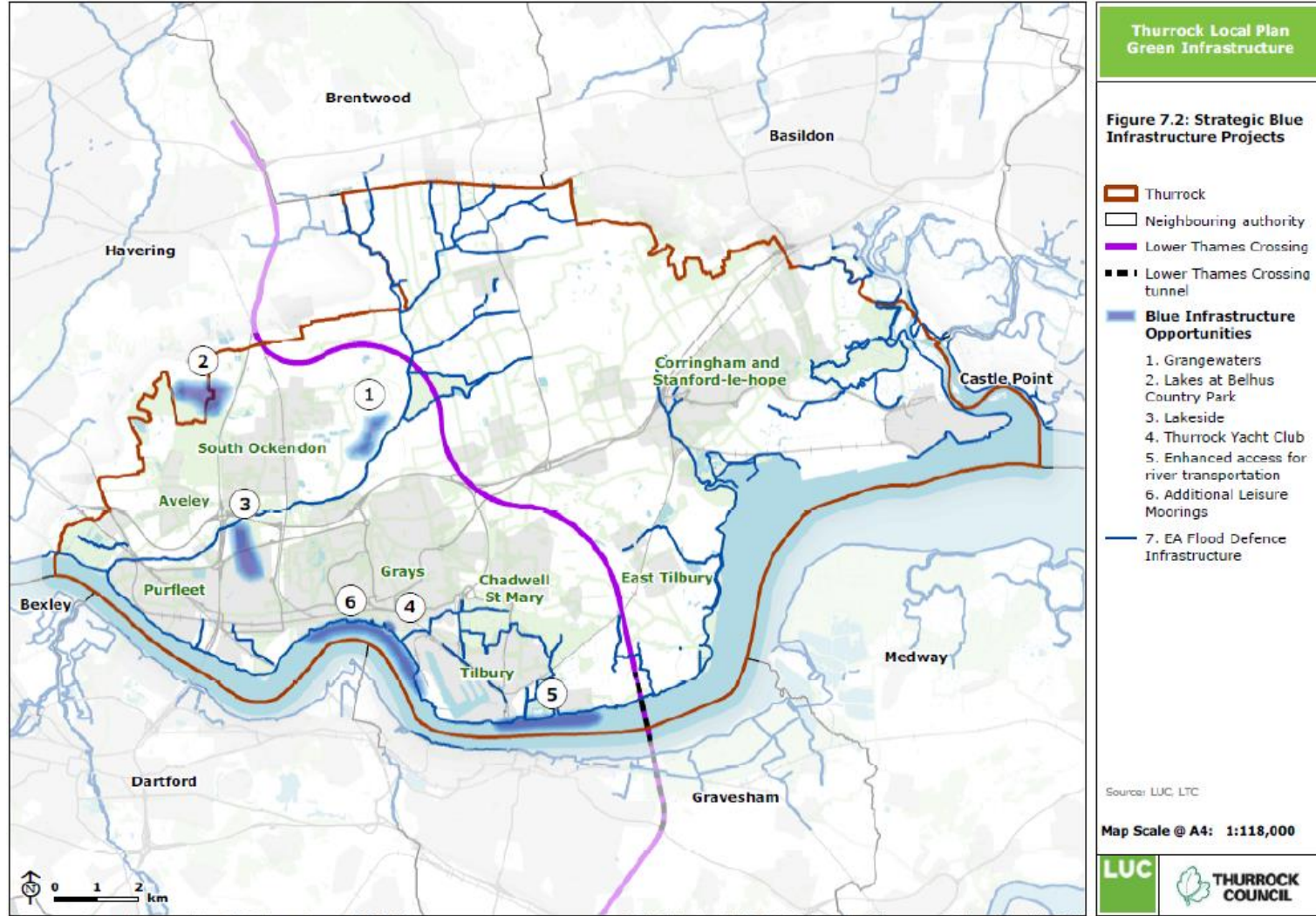
The GBI baseline



GBI proposals in 2019



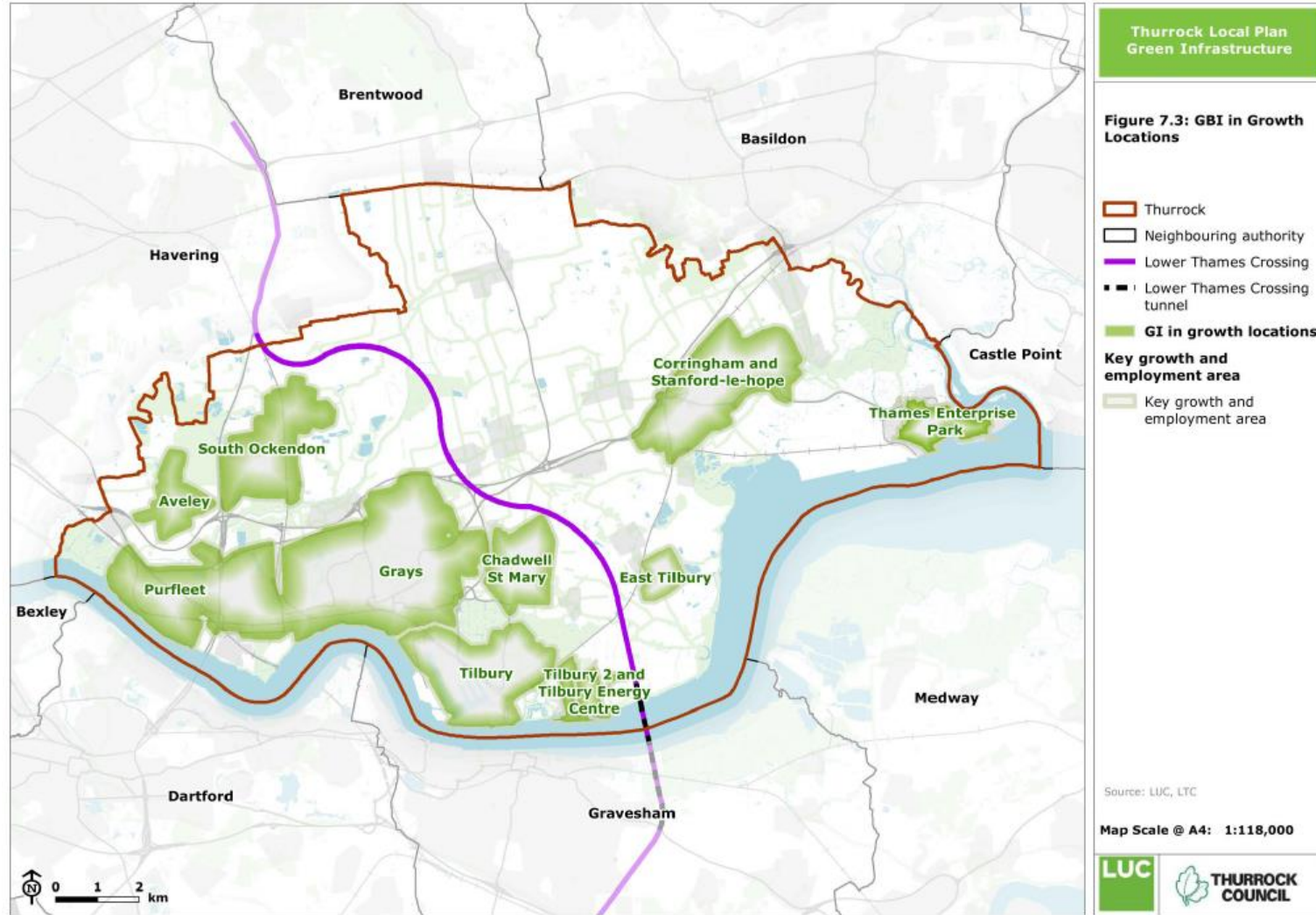
GBI proposals in 2019



© Crown copyright and database rights 2018 Ordnance Survey 100025457

CB:KS EB:Archer_L LUC FIG7_2_6767_Blue_Infrastructure_Projects_A4L 11/12/2018

GBI proposals in 2019



© Crown copyright and database rights 2018 Ordnance Survey 100025457

CB:KS EB:Archer_L LUC FIG7_3_6767_GI_Growth_Locations_A4L 11/12/2018

GBI in planning

- 'Mainstreaming' GBI – benefits across policy areas e.g. high quality design, sustainable travel, water management, biodiversity, access to open space
- Design guidance and codes – masterplanning development sites
- Funding GBI – securing developer contributions and external funding
- Longer term maintenance and governance

GBI in planning – next steps

- Stakeholder consultation on GBI strategy and proposed projects
- Align with emerging Local Plan process and other evidence base studies
- Revisit GBI proposals / identify revised priorities for strategic projects
- Make more detailed recommendations, including for:
 - Policy (strategic and site specific for growth locations)
 - Funding (both developer contributions and wider sources)
 - Implementation/governance (including ongoing management/maintenance)

Thurrock Local Plan Taskforce

Thank you!

Any questions?

Doug McNab

Associate Director, Planning

Doug.McNab@landuse.co.uk

